



Burdett Crossing SC Space For Lease

1701-1739 NW Burdett Crossing, Blue Springs, MO



LEASE RATE: \$12-\$16/SF | 950 SF TO 7,000 SF

DEMOGRAPHICS

	1 mile	3 miles	5 miles
Estimated Population	8,814	51,355	91,658
Avg. Household Income	\$95,630	\$91,751	\$89,957

- Turn key large event space (7,000 - 7,950) SF available
- 950 SF grey shell retail space available
- Also available for purchase to an owner/user
- Easy access to hwy 7 and I-70
- 83 parking spaces; ratio of 5.53/1,000
- Monument signage available on 7 Highway



CLICK HERE TO VIEW MORE LISTING INFORMATION

For More Information Contact:

GARRETT COHOON | 816.412.7315 | gcohoon@blockandco.com

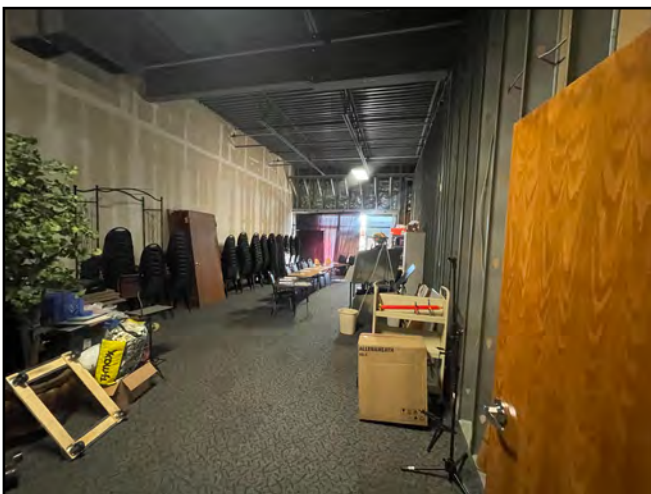
DAKOTA GRIZZLE | 816.412.7395 | dgrizzle@blockandco.com

Exclusive Agents



PHOTOS

LARGE EVENT SPACE



Burdett Crossing SC for Lease or Sale

1701-1739 NW Burdett Crossing, Blue Springs, MO

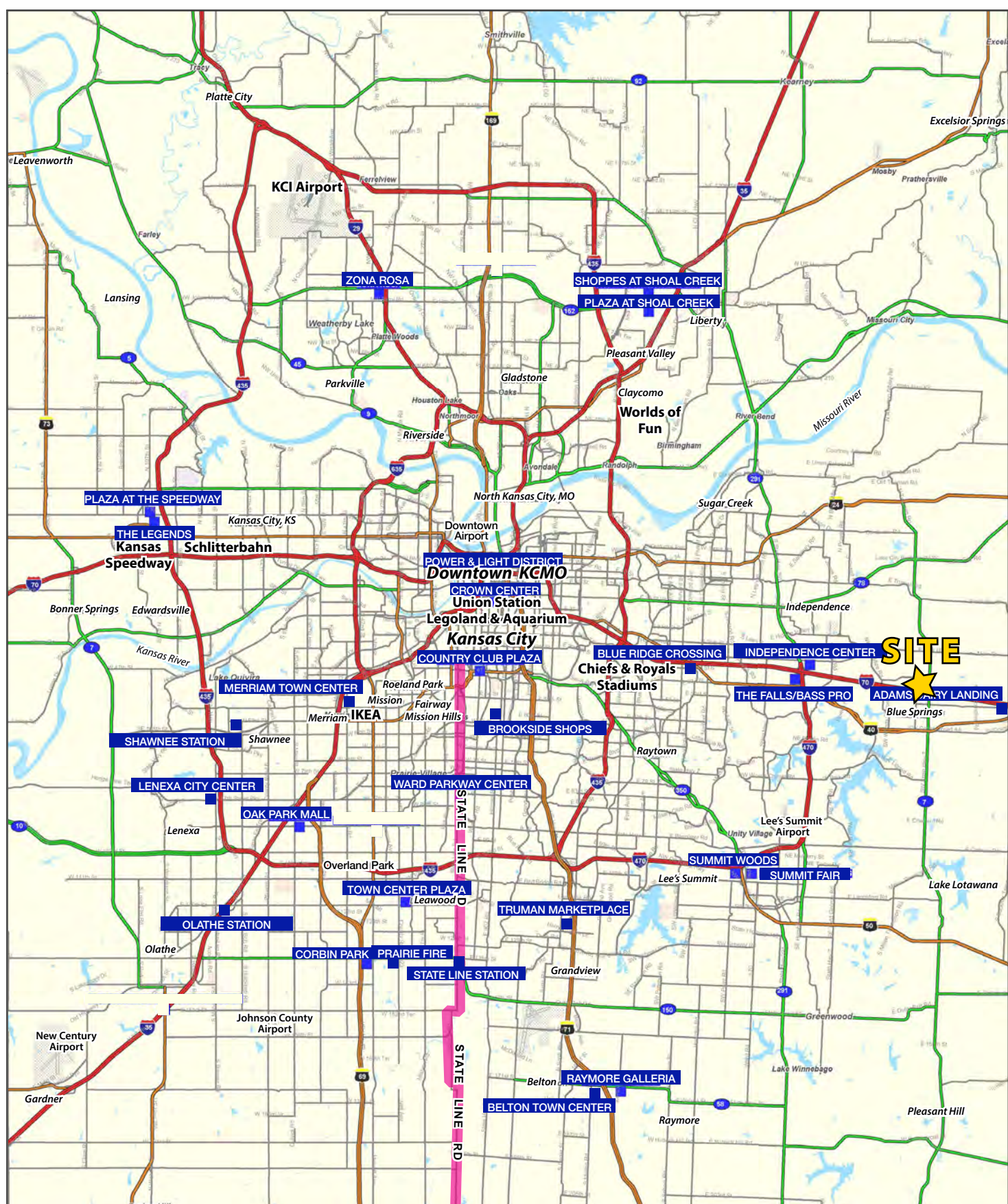
AERIAL





Burdett Crossing SC for Lease or Sale

1701-1739 NW Burdett Crossing, Blue Springs, MO

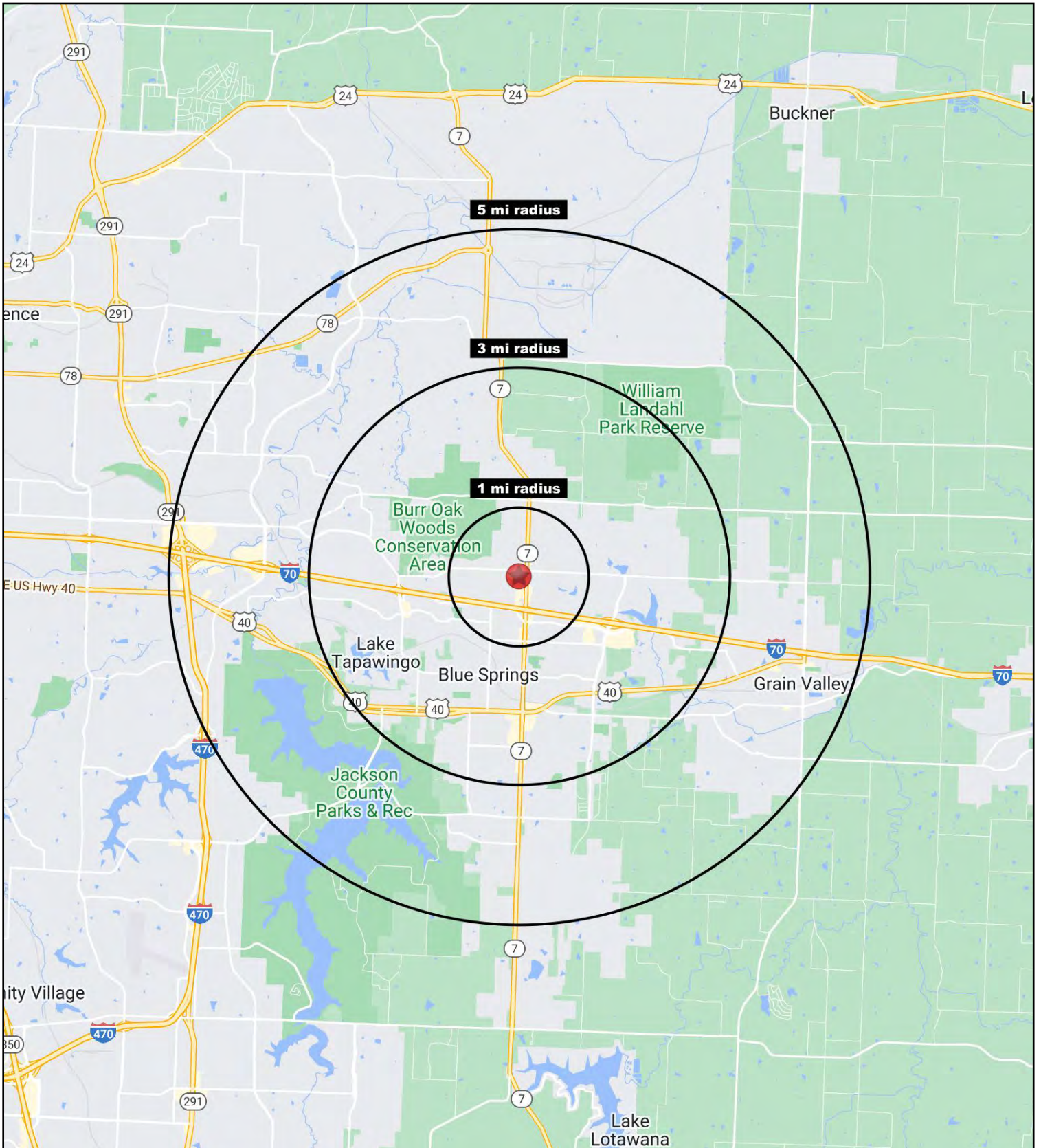


All information furnished regarding property for sale or lease is from sources deemed reliable, but no warranty or representation is made as to the accuracy thereof and the same is subject to errors, omissions, changes of prices, rental or other conditions, prior sale or lease or withdrawal without notice.



Burdett Crossing SC for Lease or Sale

1701-1739 NW Burdett Crossing, Blue Springs, MO





Burdett Crossing SC for Lease or Sale

1701-1739 NW Burdett Crossing, Blue Springs, MO

1701 NW Burdett Crossing Blue Springs, MO 64015	1 mi radius	3 mi radius	5 mi radius
Population			
2022 Estimated Population	8,814	51,355	91,658
2027 Projected Population	8,834	52,293	95,745
2020 Census Population	8,934	51,672	91,667
2010 Census Population	8,723	47,788	80,971
Projected Annual Growth 2022 to 2027	-	0.4%	0.9%
Historical Annual Growth 2010 to 2022	-	0.6%	1.1%
2022 Median Age	39.8	36.3	36.1
Households			
2022 Estimated Households	3,401	19,323	34,630
2027 Projected Households	3,374	19,481	35,765
2020 Census Households	3,422	19,282	34,377
2010 Census Households	3,334	17,894	30,285
Projected Annual Growth 2022 to 2027	-0.2%	0.2%	0.7%
Historical Annual Growth 2010 to 2022	0.2%	0.7%	1.2%
Race and Ethnicity			
2022 Estimated White	79.7%	78.8%	79.9%
2022 Estimated Black or African American	10.8%	10.9%	10.1%
2022 Estimated Asian or Pacific Islander	1.6%	1.7%	1.6%
2022 Estimated American Indian or Native Alaskan	0.3%	0.4%	0.3%
2022 Estimated Other Races	7.6%	8.2%	8.0%
2022 Estimated Hispanic	6.6%	6.6%	6.6%
Income			
2022 Estimated Average Household Income	\$95,630	\$91,751	\$89,957
2022 Estimated Median Household Income	\$85,629	\$80,592	\$81,047
2022 Estimated Per Capita Income	\$36,952	\$34,553	\$34,028
Education (Age 25+)			
2022 Estimated Elementary (Grade Level 0 to 8)	1.1%	0.8%	1.3%
2022 Estimated Some High School (Grade Level 9 to 11)	3.7%	3.3%	3.5%
2022 Estimated High School Graduate	22.6%	27.8%	28.4%
2022 Estimated Some College	25.6%	24.6%	23.9%
2022 Estimated Associates Degree Only	8.4%	8.6%	8.5%
2022 Estimated Bachelors Degree Only	25.3%	22.9%	22.4%
2022 Estimated Graduate Degree	13.3%	12.0%	12.1%
Business			
2022 Estimated Total Businesses	388	1,627	2,807
2022 Estimated Total Employees	3,394	15,080	33,071
2022 Estimated Employee Population per Business	8.8	9.3	11.8
2022 Estimated Residential Population per Business	22.7	31.6	32.7

©2022, Sites USA, Chandler, Arizona, 480-491-1112 Demographic Source: Applied Geographic Solutions 11/2022, TIGER Geography - RS1

